



PRRIP – ED OFFICE MEMORANDUM

TO: GOVERNANCE COMMITTEE
FROM: EXECUTIVE DIRECTOR'S OFFICE
SUBJECT: TRACT 1905 EVALUATION SUMMARY AND RECOMMENDATION
DATE: NOVEMBER 19, 2019
CC: LAND ADVISORY COMMITTEE

I. REQUESTED GOVERNANCE COMMITTEE ACTION

The Land Advisory Committee (LAC) requests that the Governance Committee (GC) cease pursuit of tract 1905.

II. LAC RECOMMENDATION

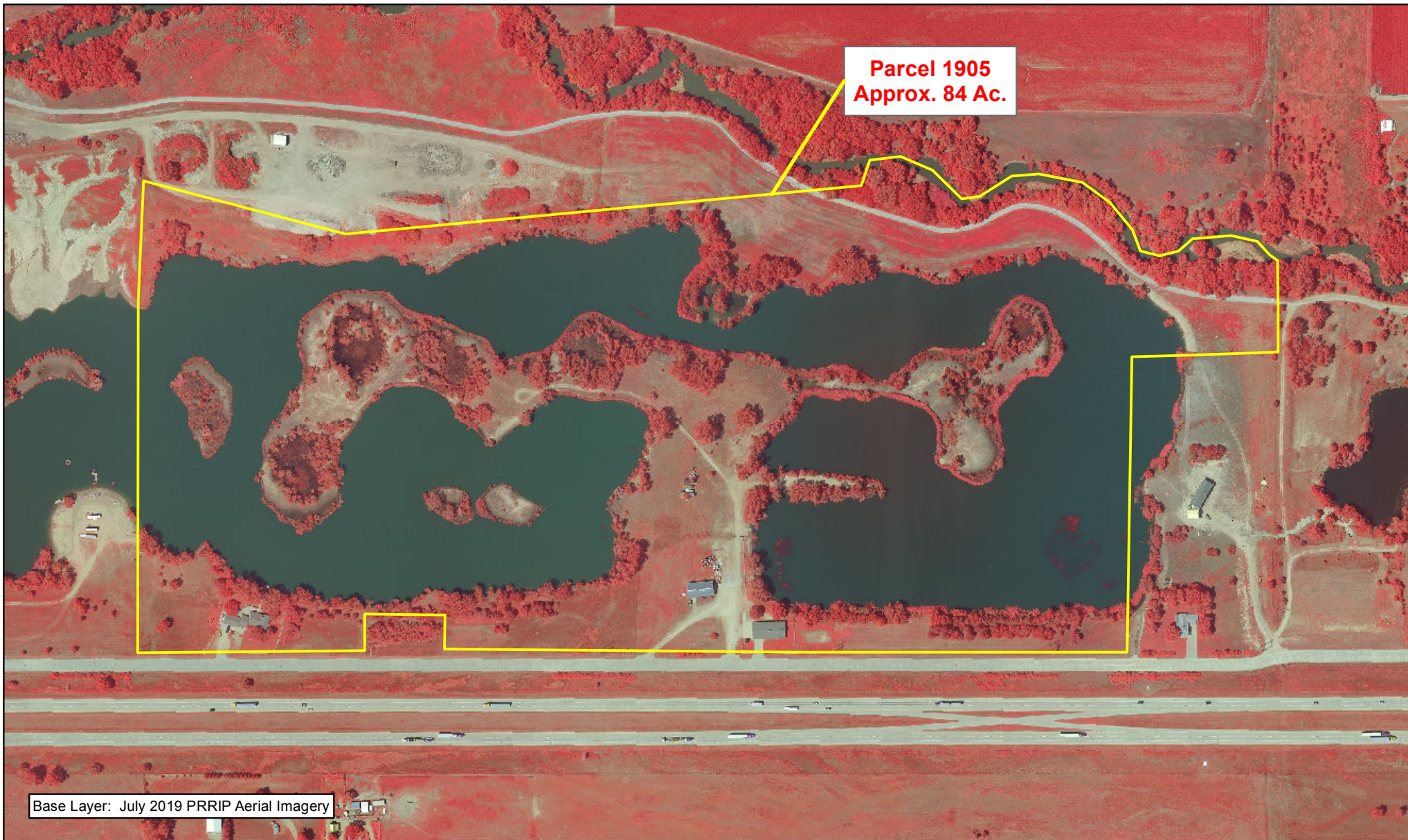
On October 29, 2019, the LAC voted unanimously to recommend that the Governance Committee cease pursuit of tract 1905.

III. TRACT DESCRIPTION

Tract 1905 is approximately 84 acres in size and is located in section 7, T-8N, R-15W (Figure A-1). The tract is located in the Kearney to Highway 10 bridge segment (Figure A-2).

IV. HABITAT CONSIDERATIONS


Tract 1905 was considered by the evaluation team as non-complex off-channel sand and water habitat. The available habitat area, at around 13-15 acres, is relatively small for the overall size of the tract. The peninsula of this tract is low in height relative to the water levels and there are some interior wetlands that would take away from potential nesting area. Additionally, the offering for tract 1905 includes two home sites which add unnecessary cost to the property. The LAC recommends that the GC vote to cease pursuit of this tract.



Legend

 1905

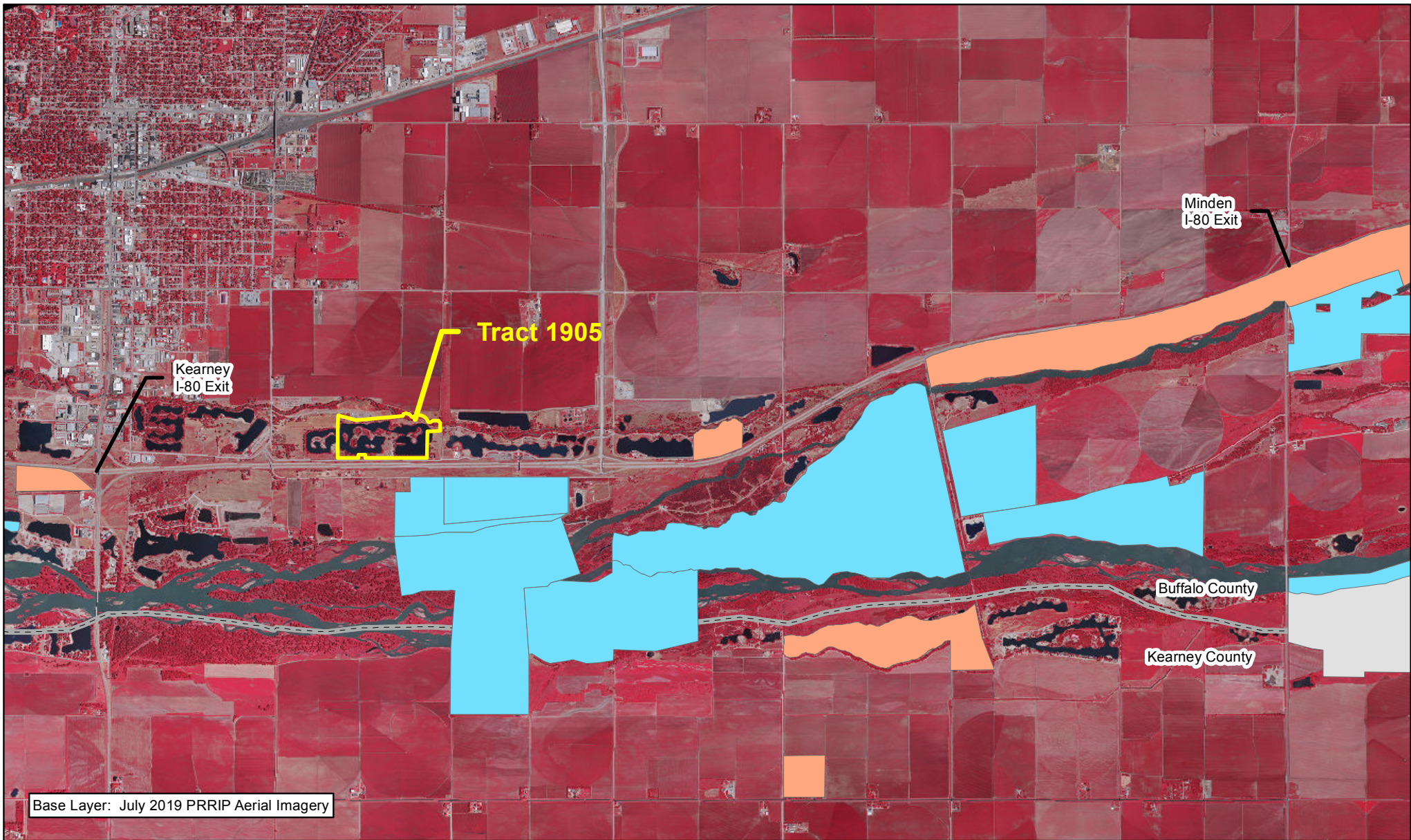


 Miles
0.1


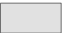



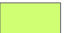





**TRACT 1905
BOUNDARY MAP**

Parcel Evaluation
Date: 10/18/19
By: JDB


Figure A-1



Legend

	1905		Audubon		PRRIP
	County		CNPPID		PRWCT
			Ducks Unlimited		TNC
			NGPC		USFWS
			NPPD		



 Miles
1

TRACT 1905 LOCATION MAP

Parcel Evaluation
Date: 10/18/19
By: JDB

Figure A-2